

# 450AJ

## PLATAFORMA DE LANÇA ARTICULADA



### KEY SPECS

**Platform Height**  
45-ft / 13.72-m

**Up and Over Height**  
24-ft / 7.3-m

**Horizontal Outreach**  
25-ft / 7.62-m

**Platform Capacity**  
550-lb / 250-kg

### KEY FEATURES

- Improved multifunction capability for increased productivity.
- Provides durability and serviceability with DuraTough hood design.
- Delivers a zero calibration automatic load sensing system that eliminates the need to use external weights to calibrate the machine.
- Optimized 550-lb platform capacity for occupants and tools.

### ACCESSORIES & OPTIONS

- 1/2-in Airline to Platform
- 43.5-lb Propane Tank
- AC Generator, 2500W
- Accessory Packages:
  - SkyGlazier® Package
  - SkyPower® Package
  - SkyWelder® Package
- Arctic Package<sup>1</sup>
- Cold Weather Package<sup>2</sup>
- Hostile Environment Package<sup>3</sup>
  - Hostile Environment Extreme Package<sup>4</sup> (2WS Only)
  - Light Package
  - Platform Mesh to Mid or Top Rail
    - Aluminum or Plastic
  - Platforms
    - Drop Bar, 30 x 36-in, 30 x 48-in, 30 x 60-in, 30 x 72-in
    - Fall Arrest, Rear Entry, 30 x 60-in
  - Inward Self-Closing Swing Gate, 30 x 48-in, 30 x 60-in, 30 x 72-in
  - SkySense® Enhanced Detection System
  - Soft Touch
  - Storage Tray - Center or Corner
  - Tow Bar
  - Welder Ready Package
  - White Noise Alarm

### STANDARD SPECIFICATIONS

#### Performance

Platform Height	45-ft / 13.72-m
Horizontal Outreach	25-ft / 7.62-m
Up and Over Height	24-ft / 7.3-m
Swing	355 Degrees Non-Continuous
Platform Capacity	550-lb / 250-kg
Platform Rotator	180 Degrees Hydraulic
Jib	4-ft 1-in / 1.24-m
Range of Articulation	145 Degrees (+76, -69)
Weight*	14,150-lb / 6,418-kg
Max. Ground Bearing Pressure	65 psi / 4.57 kg/cm <sup>2</sup>
Drive Speed	4.25 mph / 6.8 km/h
Gradeability 2WD / 4WD	30% / 45%
Tilt Cut Out	5 Degrees
Axle Oscillation	4-in / 10-cm
Turning Radius Inside	6-ft 9-in / 2.06-m
Turning Radius Outside	15-ft 8-in / 4.78-m

#### Engine

Dual Fuel – Kubota WG2503	60 hp / 44 kW
Diesel Fuel – Deutz D2.9L4 Tier 4 Final	49 hp / 36.4 kW
Fuel Tank Capacity	16 gal / 60.6 L

#### Tires

Standard	Foam Filled, 33/1550 x 16.5
Optional	Foam Filled Low Profile Non-marking, IN315/55D20
	Foam Filled Low Profile, IN315/55D20
	Foam Filled Non-marking, 12 x 16.5
	Foam Filled, 12 x 16.5 or 33/1550 x 15.5
	Foam Filled Turf & Sand, 33 x 16LL500
	Solid Low Profile Non-marking, 33 x 12-20

#### Hydraulic System

System Capacity	17.3 gal / 65.5 L
Tank Capacity	15 gal / 56.8 L
Auxiliary Power	12V DC

### STANDARD FEATURES

- 4-ft 1-in (1.24-m) Articulating Jib
- 5 Degree Tilt Alarm/ Indicator Light
- 12V-DC Auxiliary Power
- 110V-AC Receptacle in the Platform
- Cast Aluminum Control Box
- ClearSky Smart Fleet™ Hardware (CS550)\*\*
- Control ADE® System
- Four-Wheel Hydrostatic Drive
- Gull-Wing Turntable Hoods
- Horn
- Hourmeter
- LED Motion/Amber Beacon (CS550)\*\*
- Improved Multi-Function Controls
- Lifting/Tie Down Lugs
- Load Sensing System
- Motion Alarm
- Oscillating Axle
- Platform Console Machine Status Light Panel
- Proportional Controls
- SkyGuard SkyLine™
- Swing-Out Engine Tray

# 450AJ

## PLATAFORMA DE LANÇA ARTICULADA

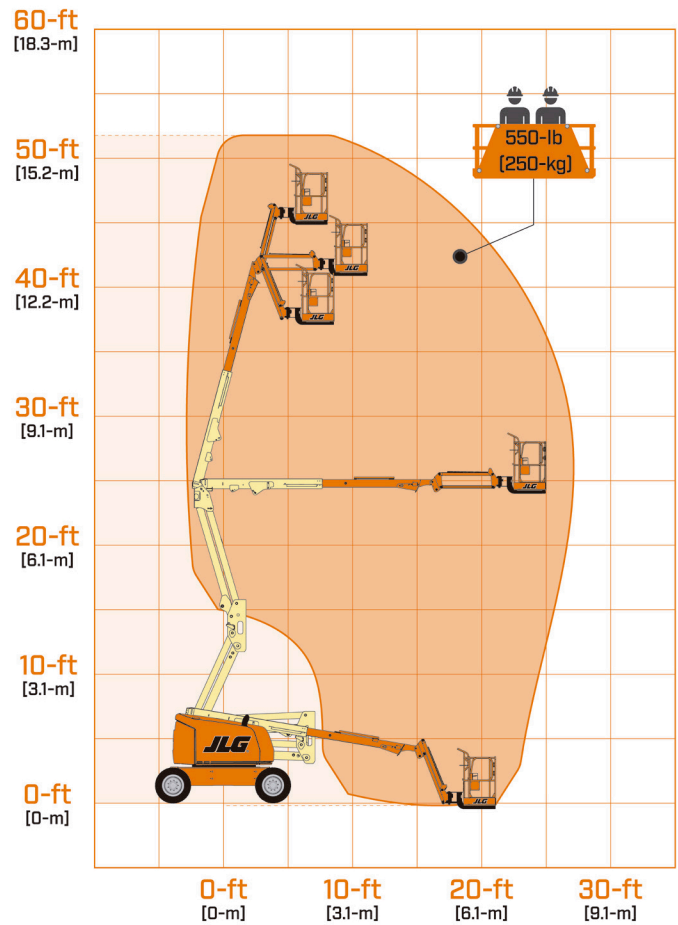
### DIMENSIONS

All dimensions are approximate



A.	Platform Width	30-in / 0.76-m
B.	Platform Length	72-in / 1.83-m
C.	Machine Width	7-ft 8.6-in / 2.35-m
D.	Tailswing	Zero
E.	Machine Height	7-ft 5.3-in / 2.27-m
F.	Machine Length	21-ft 6.9-in / 6.57-m
G.	Wheelbase	7-ft 9-in / 2.36-m
H.	Ground Clearance	16.4-in / 41.7-cm

### REACH DIAGRAM



ACESSE NOSSO SITE

